

Auto Code PC Software Installation Instructions

This guide provides you with details of how to
install the Auto Code PC Software



Technology that moves you

Contents

Auto Code Download Application	2
Auto Code Registration Procedure	3
Auto Code Update Procedure.....	8
Options.....	9

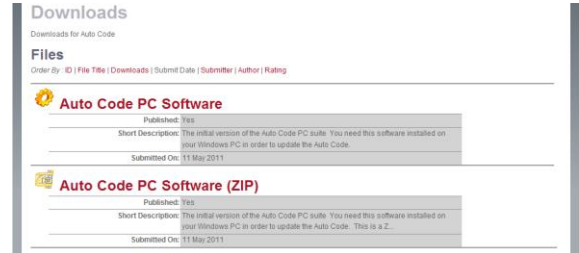
Auto Code Download Application

Follow this procedure to download the latest Auto Code suite from the www.westfalia-autocode.co.uk website. If you experience any problems then contact Product Support on (0844) 561 7861.

1. If you have not already done so, register on the website. Navigate to Products – Auto Code – Downloads.



2. Select Auto Code Suite. If you do experience problems download the Auto Code Suite (ZIP). If you are unfamiliar with how to extract this file once downloaded, contact Product Support on (0844) 561 7861.



3. Select download.



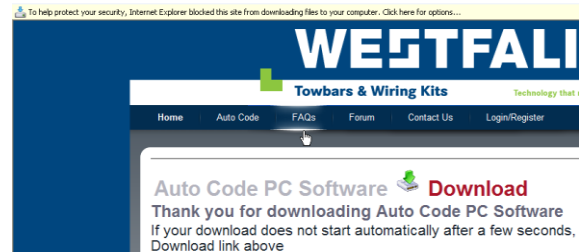
4. Read through the Terms and conditions.



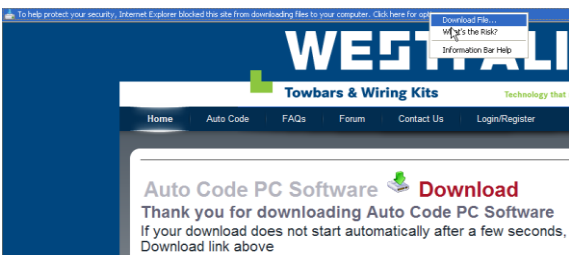
5. Tick to agree the terms and then select download.



6. You may get a Yellow bar along the top of the window as the one below.



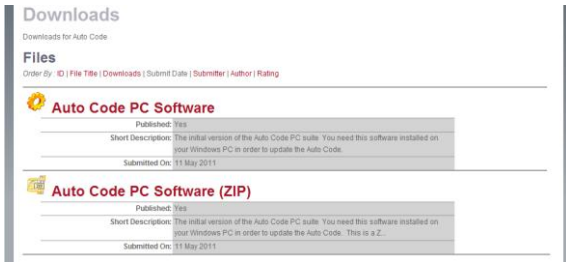
7. Click on it and select 'Download File...'



Auto Code Registration Procedure

Follow this procedure if you are a new Auto Code subscriber and your screen displays **'Not subscribed'**. If you are a non internet subscriber, then registration can be achieved by contacting Product Support (0844) 561 7861 and by following the **'Register App'** menu on the handset.

1. To download the **Auto Code Suite** Application select the link shown below from www.westfalia-autocode.co.uk. You will need to register on the site first.

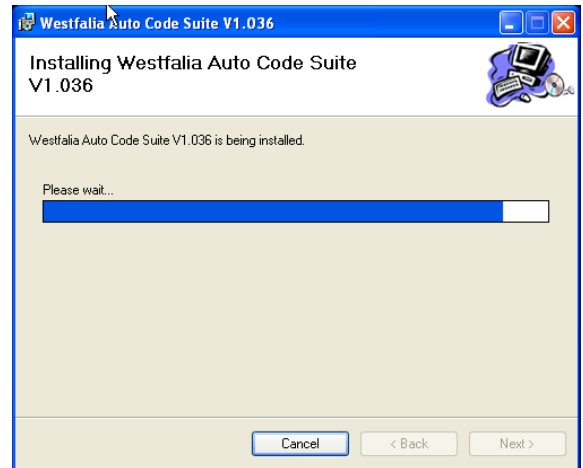


2. Select download **'Auto Code Suite'**, select **'Run'** and follow the on-screen instructions to install.



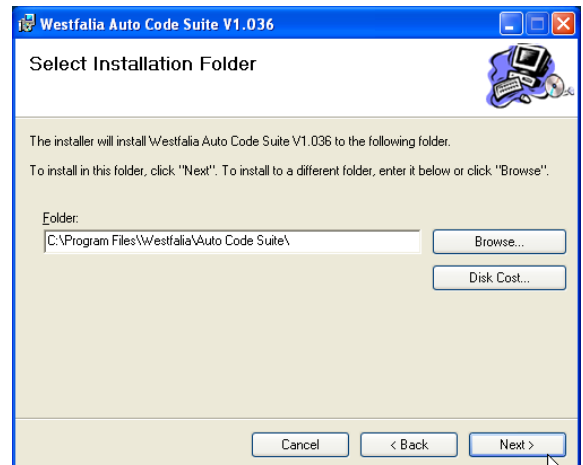
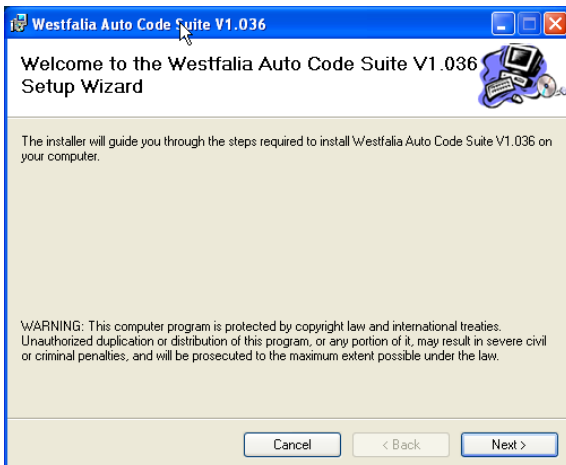
3. You will receive a warning saying that the publisher cannot be verified, select **'Run'**.

4. The progress of the download will be shown on screen.

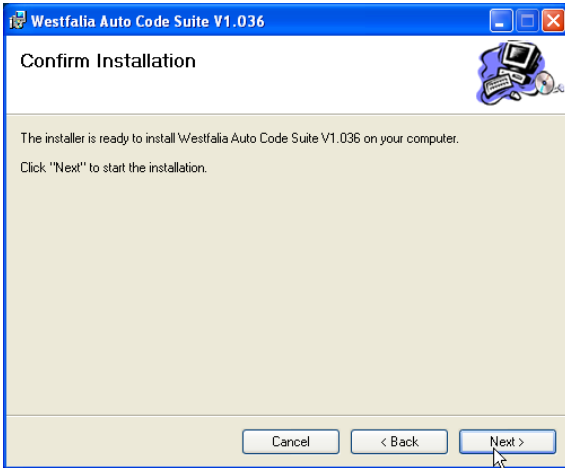


5. After you have run the Auto Code suite application, the **'Welcome to the 'Auto Code Setup Wizard'** will be displayed, select **'Next'**.

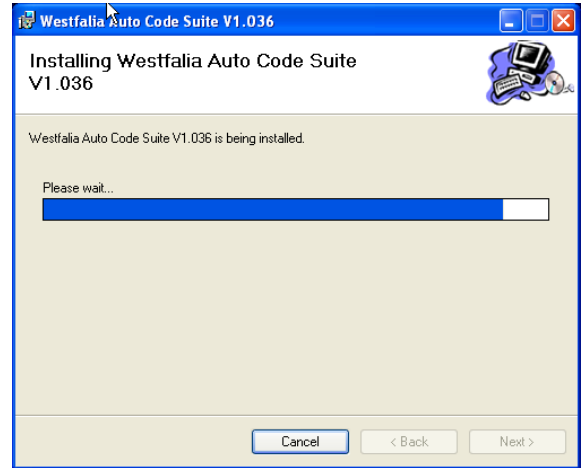
6. The **'Select installation Folder'** screen will appear accept the folder if appropriate and select **'Next'**.



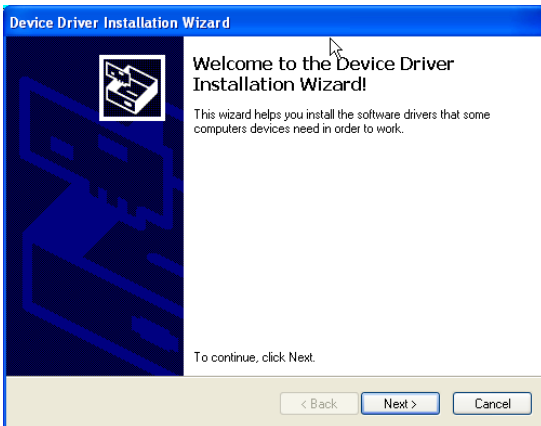
7. When the **'Confirm Installation'** screen appears select **'Next'**.



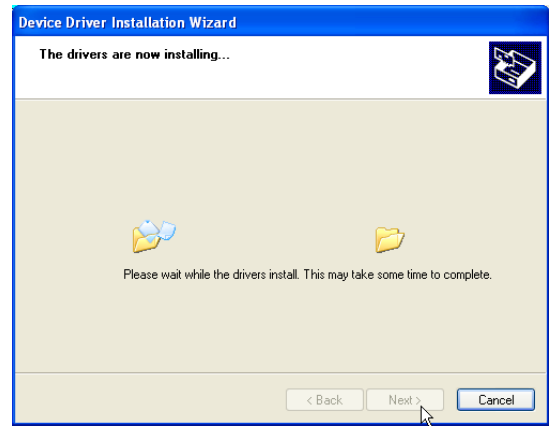
8. The **'Installing the Auto Code Suite'** screen will be launched, once the software has been successfully installed select **'Next'**.



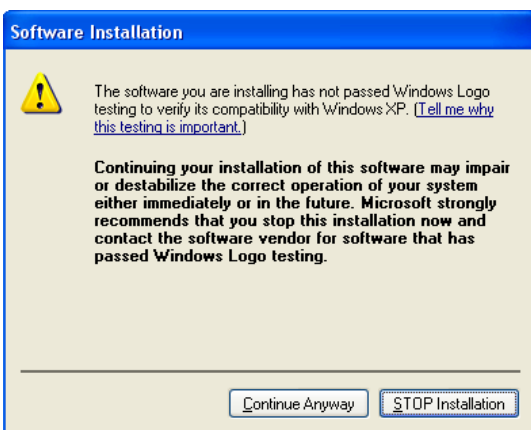
9. As this is the first time that your Auto Code has been connected to your PC, the **'Device Driver Installation Wizard'** popup will be displayed.



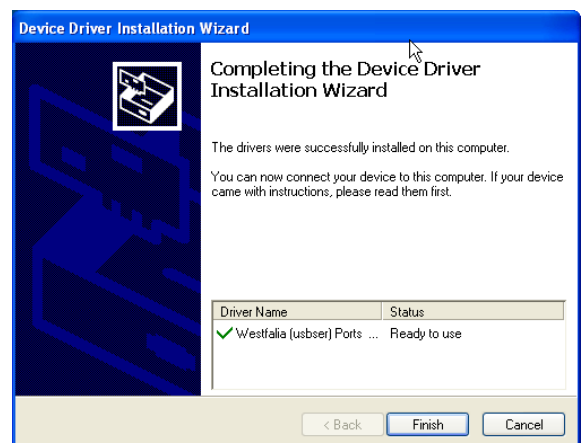
10. The installation will take a short time to complete; the screen below will be displayed during this process.



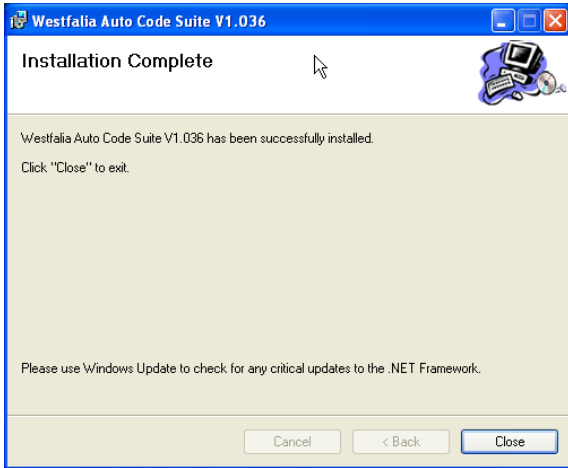
11. If you get a warning screen as below then select "continue Anyway".



12. The **'Completing the Device Driver Installation Wizard'** screen is displayed, when your Auto Code has been detected. Select **Finish**.



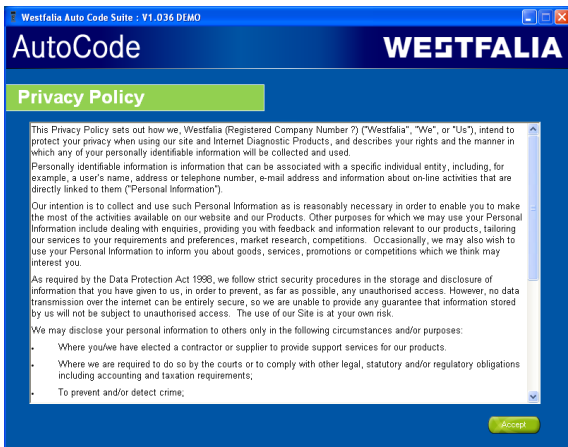
13. You will see the screen **'Installation Complete'** that confirms that the installation was successful, select **'Close'**.



14. Run the Auto Code Suite Application from the start menu, select **'Start' – 'Programs' – 'Westfalia' – 'Auto Code Suite'**. (There will also be an icon installed onto your desktop).



15. Read the Privacy Policy and accept before continuing.



16. Enter your Security Details.

- Subscription Number will be provided on paperwork with your Auto Code.
- Postcode you used when you spoke to Product Support.
- A valid Email address.



First time registration is required to enable you to get your updates and be notified of future updates.

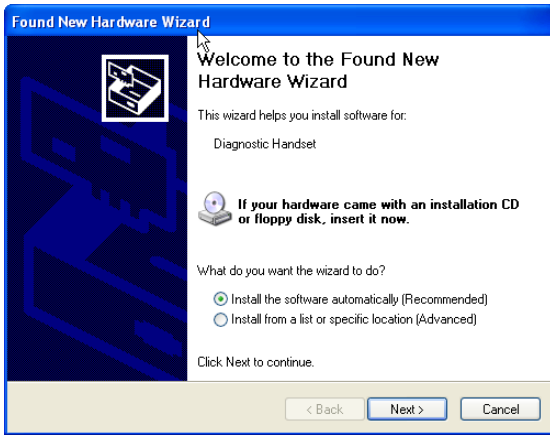
17. Select **'Auto Code Registration'** in order to register the **Auto Code**.



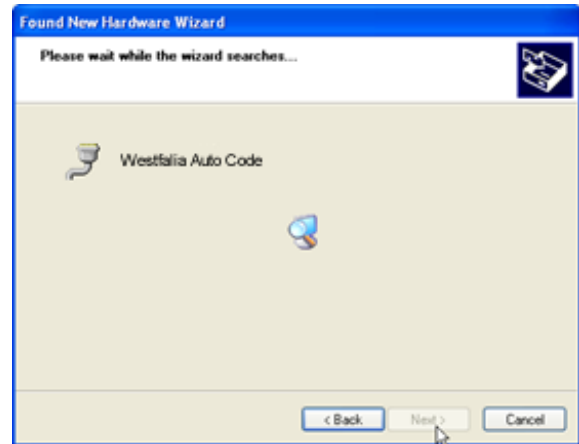
18. Connect your Auto Code as per the instructions within the Auto Code update suite. Connect mini USB to Auto Code and USB to PC



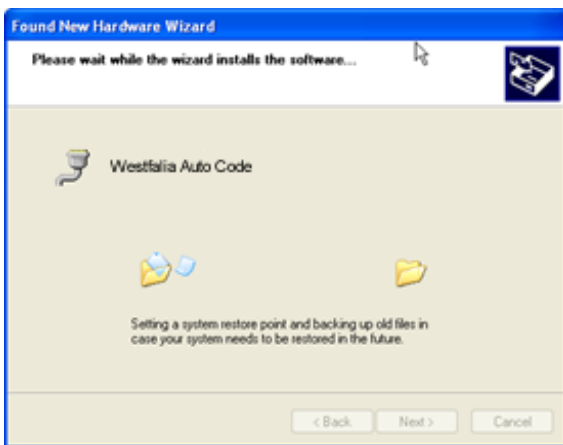
19. As this is the first time that your Auto Code has been connected to your PC, the **'Found New Hardware Wizard'** popup will be displayed.



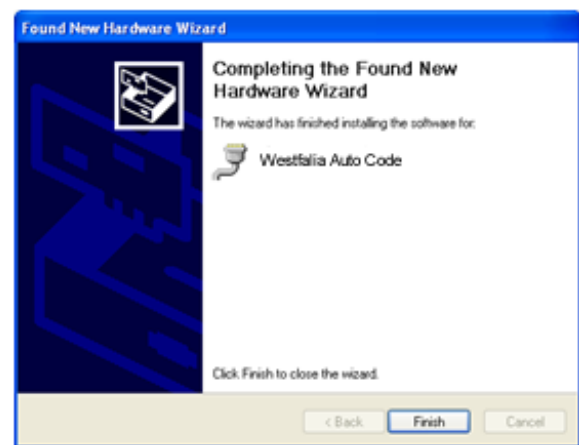
20. The wizard will search for the driver that is now installed on your computer.



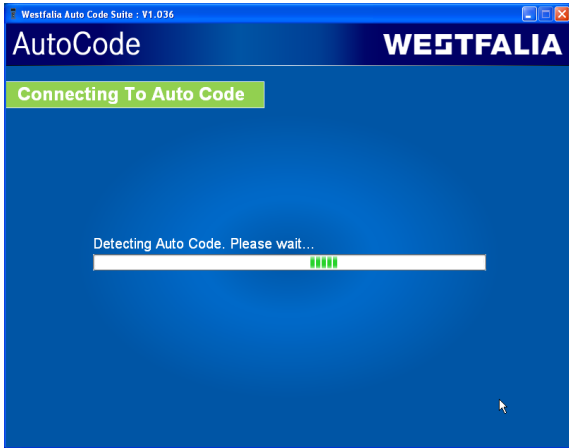
21. The installation will take a short time to complete; the screen below will be displayed during this process.



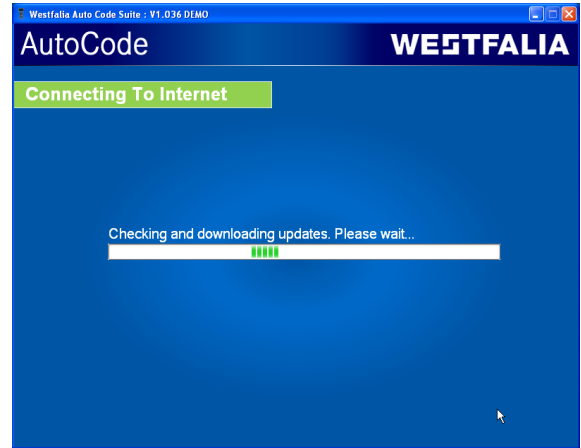
22. The **'Completing the Found New Hardware Wizard'** screen is displayed, when your Auto Code has been detected. Select **Finish**



23. The Auto Code Suite first needs to detect the Auto Code.



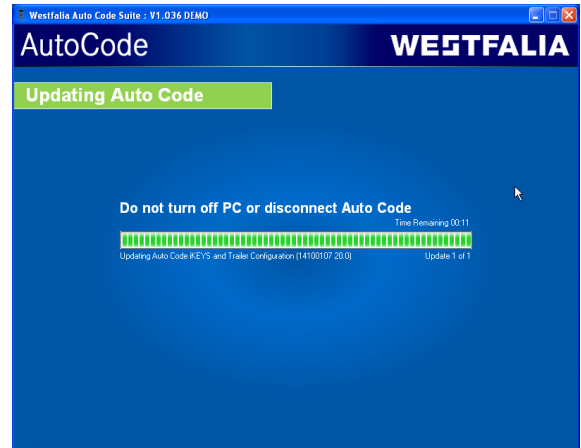
24. The Auto Code Suite will then connect to the internet to Register the Auto Code and download your first update. There may be no new updates for your Auto Code.



25. The latest updates are displayed, select 'download' to update your Auto Code and your subscription(s) will be updated with the latest applications



26. Whilst the Auto Code memory card is being updated, follow the on screen instructions



Auto Code Update Procedure

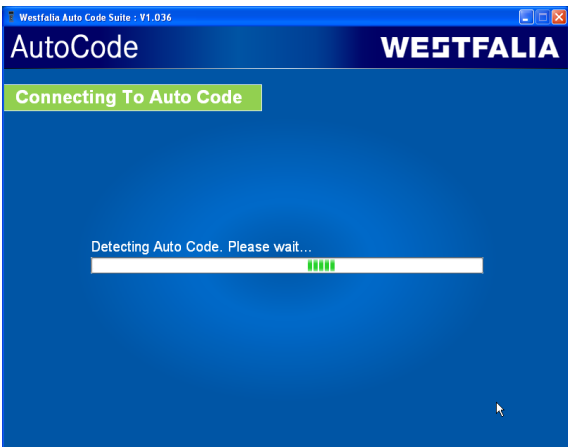
1. Run the Auto Code Suite Application
From the start menu, select **'Start' – 'All Programs' – 'Westfalia' – 'Auto Code Suite'**.
(There will also be an icon installed onto your desktop).



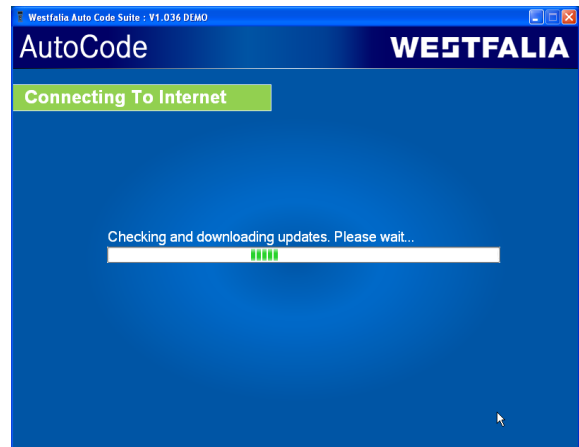
2. Select the option **'Get Auto Code Updates'**.



3. The Suite will now connect your Auto Code to the www.westfalia-autocode.co.uk website to confirm your **Subscription Number & Postcode**.



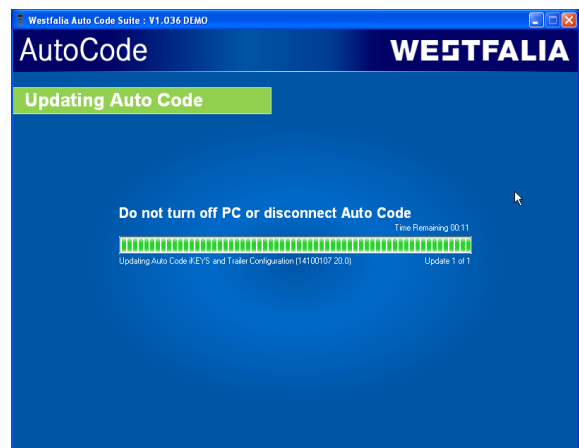
4. The Suite will now download the latest updates that you are entitled to.



5. The latest updates are displayed. Select **'Download'** to update your Auto Code, your subscription(s) will be updated with the latest software.



6. Follow the on screen instructions.



Options

1. Run the Auto Code Suite Application from the start menu select **'Start' – 'All Programs' – 'Westfalia' – 'Auto Code Suite'**. (There will also be an icon installed onto your desktop).
2. Select **'Options & Help'** from the menu.



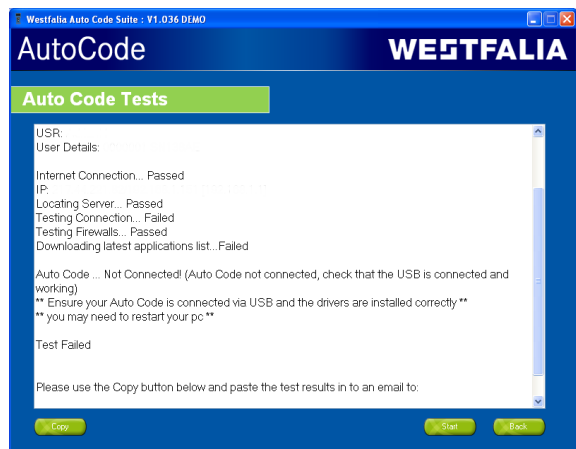
4. Selecting the **'Tests and checks'** button allows you to perform tests to verify that your Auto Code is functioning correctly and that you are able to connect to the www.westfalia-autocode.co.uk website and download the latest software.



3. If you are advised to change your **Subscription Number & Postcode** you can do this from here. Also please keep your email address up to date here to ensure you receive the latest information from.



5. You will be asked to perform these tests if you experience problems and need to contact a Product Support representative or engineer. This information is also reported back to the www.westfalia-autocode.co.uk website in order for the engineer to assist you in resolving your problem.



6. Selecting the **'Auto Code re-install'** button allows you to force the Auto Code to download your latest update again. This can be used if you think there is a problem with your last update.



7. Connect your Auto Code as per the instructions within the Auto Code update suite. Connect mini USB to Auto Code and USB to PC. Refer to the **'Auto Code Update Procedure'** for more information.





Technology that moves you

Westfalia UK Limited, St Alban's House, St Alban's Road, Stafford, ST16 3DP
Tel: +44 (0) 1785 226 888, Fax: +44 (0) 1785 248 963, admin.uk@westfalia-automotive.de
www.westfalia-automotive.co.uk