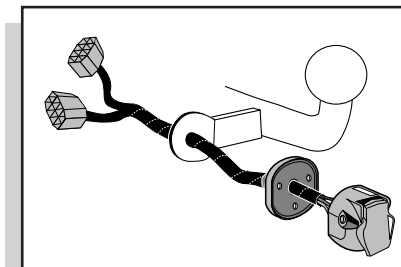


Montage-handleiding elektrokabelset voor
trekhaak met 13-P contactdoos
vlgs. DIN/ISO norm 11446

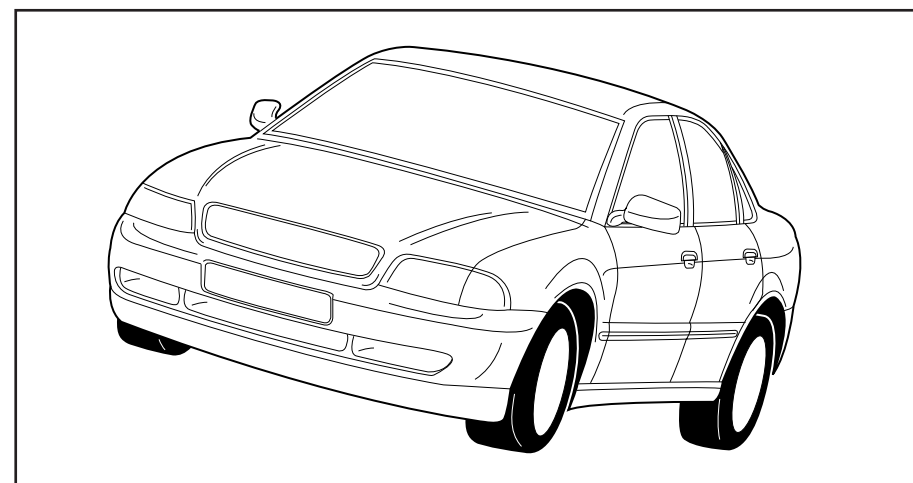
Fitting instructions electric wiringkit
towbar with 13-P socket up to
DIN/ISO norm 11446

Einbauanleitung Elektrosatz
Anhängervorrichtung mit 13-P Steckdose
lt. DIN/ISO Norm 11446

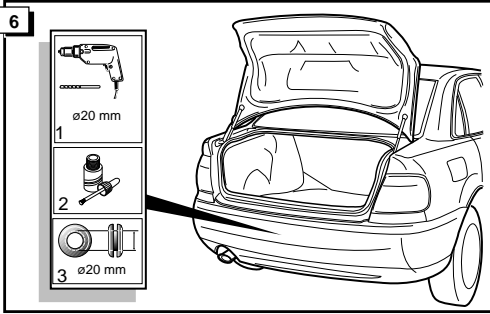
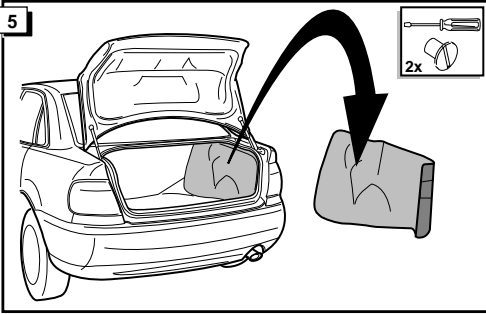
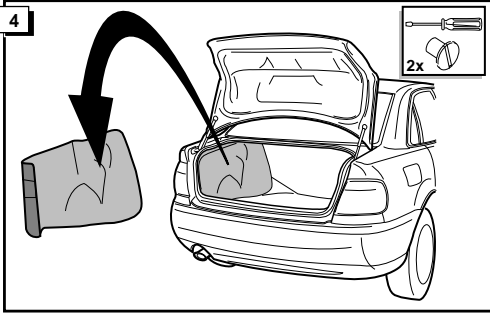
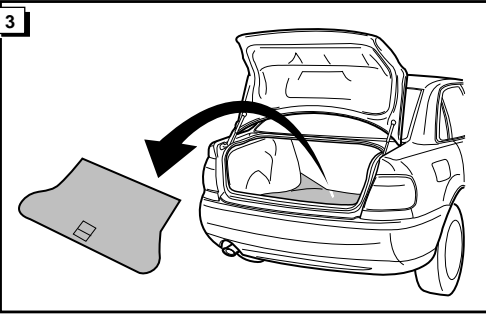
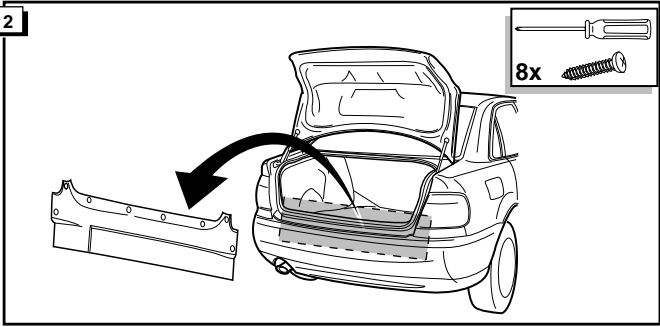
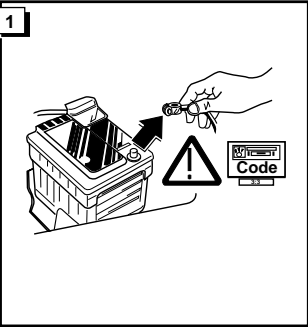
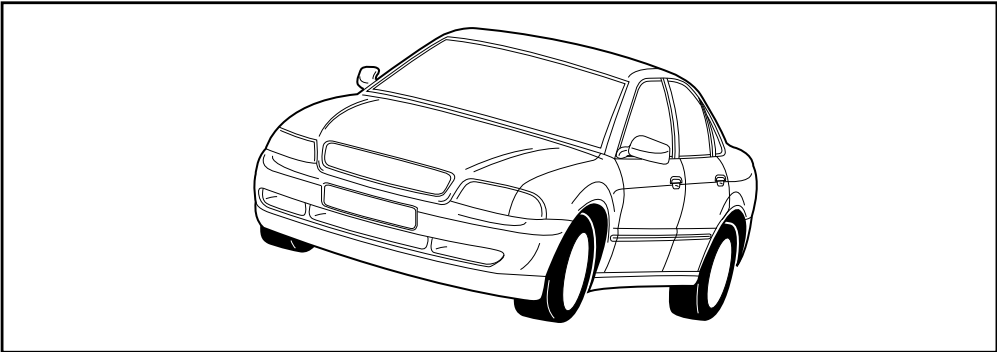
Instructions de montage du faisceau
électrique pour crochet d'attelage
conforme à la norme DIN/ISO 11446
prise 13-P

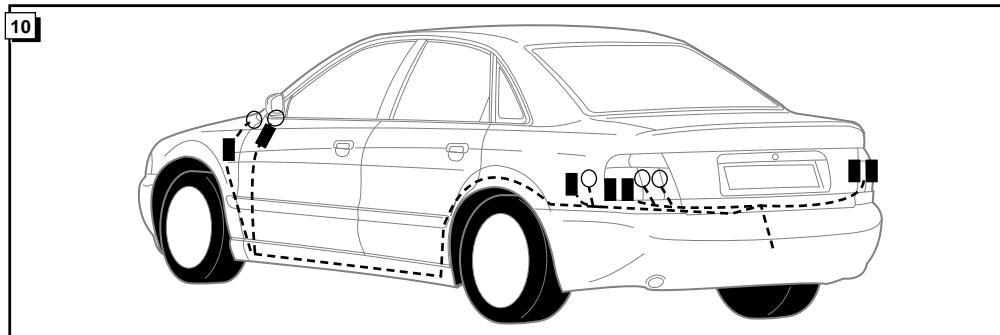
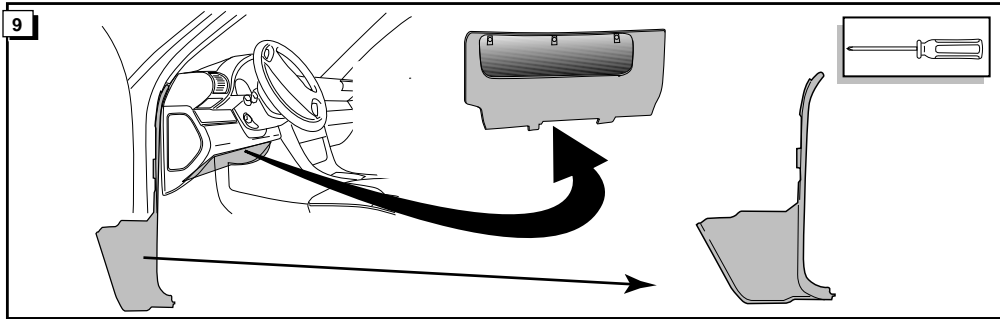
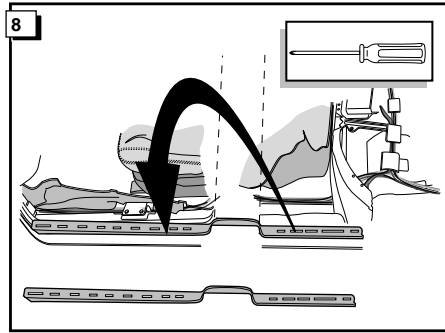
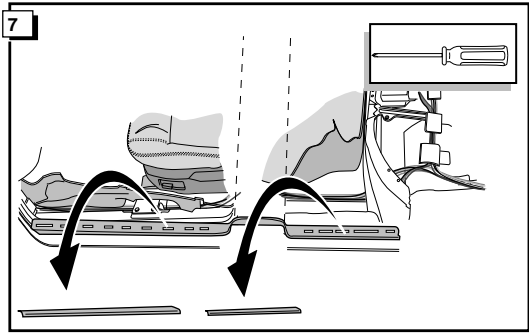


AUDI A4 1995- WITHOUT CHECK CONTROL



Bestel Nr.: VAG-935-B





11

KNIPPERLICHT LINKS
 L.H. INDICATOR
 BLINKER LINKS
 CLIGNOTANT GAUCHE
 INTERMITENTE, IZQUIERDA
 BLINKERS VÄNSTER

ACHTERLITRUJ-LICHT
 REVERSE LIGHT
 RÜCKFAHR LEUCHE
 PHARE DE RECUL.
 LUZ DE MARCHA ATRÁS
 BACKLAMP

ACHTERLICHT LINKS
 L.H. REARLIGHT
 SCHULLEUCHE LINKS
 FEU ARRIERE GAUCHE
 LUZ TRASERA, IZQUIERDA
 BAKLAMP VÄNSTER

REMLICHTEN
 BRAKELICHTS
 BREMSLEUCHE
 FEU DE STOP
 LUCES DE FRENAO
 BROMSLUIS

KNIPPERLICHT RECHTS
 R.H. INDICATOR
 BLINKER RECHTS
 CLIGNOTANT DROIT
 INTERMITENTE, DERECHA
 BLINKERS VÄNSTER

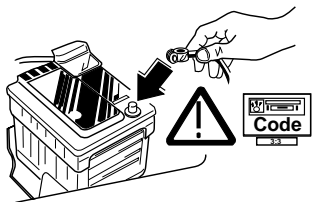
ACHTERLICHT RECHTS
 R.H. REARLIGHT
 SCHULLEUCHE RECHTS
 FEU ARRIERE DROIT
 LUZ TRASERA, DERECHA
 BAKLAMP HÖGER

MASSA
 EARTH
 MASSE
 MASA
 JORD

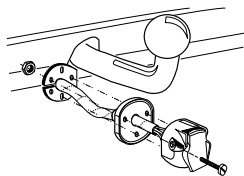
MASSA
 EARTH
 MASSE
 MASA
 JORD

	NL	GB	D	F
1/L	GEEL	YELLOW	GELB	JAUNE
2	BLAUW	BLUE	BLAU	BLEU
2a	GRIJS	GREY	GRAU	GRIS
3/31	WIT	WHITE	WEIß	BLANC
4/R	GROEN	GREEN	GRÜN	VERT
5/58-R	BRUIN	BROWN	BRAUN	MARRON
6/54	ROOD	RED	ROT	ROUGE
7/58-L	ZWART	BLACK	SCHWARZ	NOIR
8	ZW/RD	BL/RD	SCHW/RT	NO/RO
9	BR/WI	BR/WHI	BR/WE	MAR/BLA
10				
11				
12				
13	WIT	WHITE	WEIß	BLANC

30



31



32

CONTROLEER FUNCTIES !

CHECK FUNCTIONS !

FUNKTIONEN KONTROLIEREN !

CONTRÔLER LES FONCTIONS !

INFO

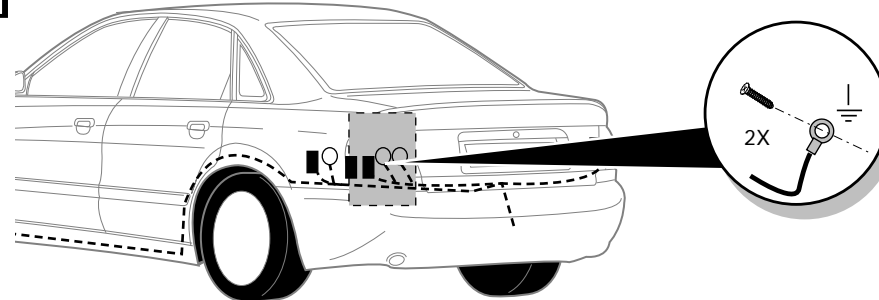
-By switching on flashers with the trailer connected (3x21W) or the warning lights (6x21W), the 2nd direction indicator light will flash.

-Het controle-lampje knippert wanneer bij aangesloten aanhanger de knipperlichten (3x21W) of waarschuwingslichten (6x21W) ingeschakeld zijn.

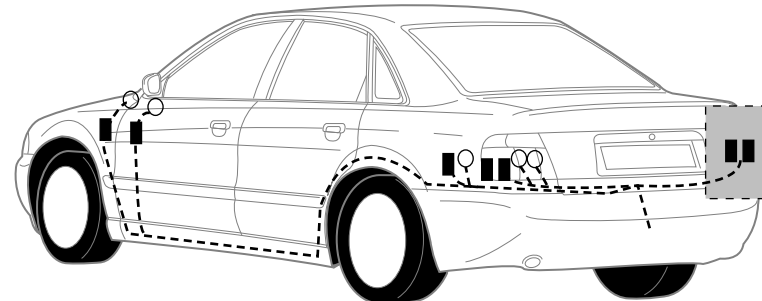
-Die Kontrolleuchte blinkt, wenn beim angeschlossenen Anhänger die Blinker (3x21W) oder Warnblinkanlage (6x21W) eingeschaltet sind.

-Le deuxième témoin de contrôle clignote lorsque les feux de détresses (6X21W) et les clignotants (3X21W) du véhicule sont allumés alors que la caravane/remorque est accouplée au véhicule.

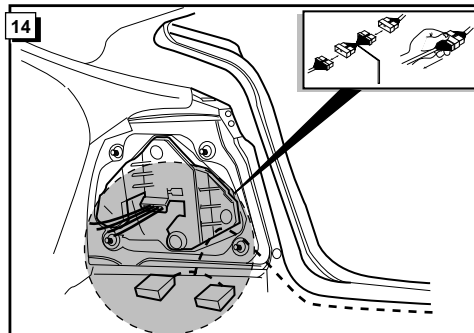
12



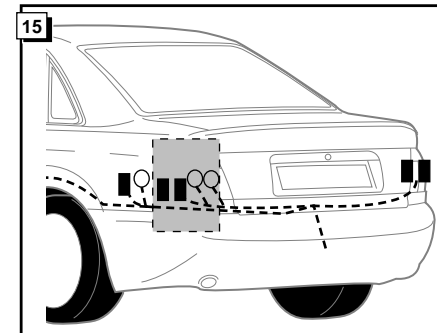
13



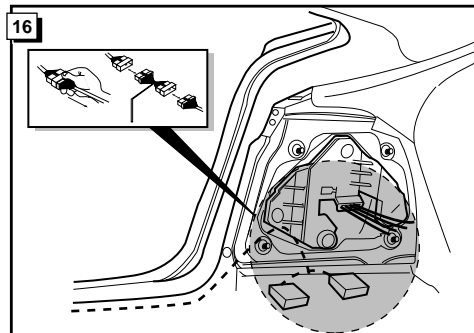
14



15



16



17

